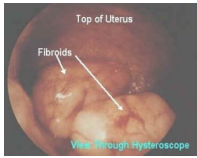


## HYSTEROSCOPIC SURGERY



Hysteroscopic evaluation of the uterine cavity is done for women with tuberculosis, synechiae, submucous fibroids or Mullerian uterine anomalies. Proximal

tubal cannulation for women with tubal block is performed to improve fertility.

## DONOR & SURROGACY

For consenting couples who opt for donor insemination, highly confidential and ethical services are available. Donor Oocyte & Gestational Surrogacy Services are also offered if medically indicated.



## IVF & ICSI (Test –Tube baby)

Assisted Reproductive Procedures are performed in Queens Embryology Lab with attached theatre. The Oocytes retrieved after Gonadotrophin injections are fertilized with sperm by IVF or ICSI. Once healthy embryos are formed, they are transferred to the uterus on Day 3.



The Center is experienced in both agonist and antagonist protocols for Controlled Ovarian Hyperstimulation.

## VITRIFICATION

If indicated, embryos can be frozen by Vitrification for Frozen embryo transfer at a later date. This greatly reduces the cost of successive therapy cycles to the couples.

## Dr NIRMALA VIJAYKUMAR

**MD (OG), MRCOG, ART**

is an alumni of TVMC (1992-1997). After completion of post graduation at SRMC, Chennai, she trained for 3 years at UK, specializing in gynecology and infertility at Queens Medical Center, Nottingham. Having worked for two years as Assistant Professor in Chettinad Medical College, she became consultant of Reproductive Medicine in Meenakshi Mission Hospital, Madurai. She is experienced in all aspects of IVF/ICSI with special interest in Fertility Surgery.



## Dr DAHLIA BHARATH

**MD(OG), DGO, ART**

is an alumni of Madras Medical College (1996-2002) and underwent postgraduate training in Institute of Obstetrics & Gynecology, Egmore, Chennai. She was the winner of The prestigious Sir A.L.Mudaliar prize in 2004 for her academic excellence. She is trained in Assisted Reproductive Techniques of IVF/ICSI, donor IVF, Surrogacy and also Sperm retrieval procedures– PESA, TESA, TESE, with special interest in PGD and in vitro maturation of oocytes.

**For appointments**

**0462-2574033**

**queensfertility@gmail.com**

The logo for Queens Fertility Center features a green circle with a yellow sperm cell. The banner below it says 'QUEENS FERTILITY CENTER' and 'MALE &amp; FEMALE INFERTILITY CARE'. Below the banner is a photo of a woman holding a child, with the text 'We Care...You Conceive'. At the bottom, it lists 'Dr.Nirmala Vijaykumar MD(OG), MRCOG,ART' and 'Dr.Dahlia Bharath MD(OG), DGO,ART' with the hours '7.00 AM to 7.00 PM - Mondays to Saturdays'.

# Nellai's First Test-Tube Baby Center

## QUEENS FERTILITY CENTER

Dedicated care for  
Male & Female Infertility

**7am to 7pm**

**Monday to Saturday**

**120, Trivandrum Road,  
opposite VOC Stadium,  
Palayamkottai, TVL 627002**

**Website**

**<http://www.queensfertilitycenter.in>**

Queens Fertility Center has full time infertility care provided by two gynecologists trained in Fertility surgery, Trans Vaginal Ultrasound and Assisted Reproductive Techniques.

It is a one stop center for infertility where both diagnostic and therapeutic services for male and female infertile patients are available.

The Queens Assisted Reproduction Center has all the facilities for In-Vitro Fertilization (IVF), Intracytoplasmic Sperm Injection (ICSI), Vitrification and Embryo transfer.

### WHO WILL BENEFIT AT QUEENS?

- Severe male infertility/ azoospermia
- Premature Ovarian Failure
- Endometriosis
- Women with tubal block & sterilization
- Women with PCOS & anovulation
- Unexplained Infertility
- Recurrent Pregnancy Loss
- Uterine anomalies
- Endocrine Disorders



## FERTILITY SERVICES AT QUEENS

### SPECIALIZED SEMEN ANALYSIS

At Queens Fertility Center, Seminal Fluid analysis is done on the temperature calibrated Lava workstation. The entire range of semen parameters including vitality and morphology staining studies are reported. Also, swim up counts, 24 hour survival counts and sperm function tests are done to predict fertility outcome for IUI or IVF.

### HORMONAL EVALUATION

Fertility evaluation and treatment involves hormonal evaluation. At Queens, male & female hormone testing can be done with results available the same day at low cost, helping us start treatment for the couple the same cycle thus saving time and money.

### TRANS VAGINAL ULTRASOUND

Women undergoing fertility treatment are thoroughly scanned by the gynecologist. Each woman's ovarian reserve is assessed by Antral Follicular Count every cycle. Also Doppler studies are used for predicting ovulation and endometrial receptivity during follicular monitoring.

### TUBAL PATENCY TESTING

Digitally enhanced Hysterosalpingogram is done as a part of routine fertility evaluation. In suspected spasm, the procedure may be done under fluoroscopic guidance in real time. Sonosalpingography is also available.

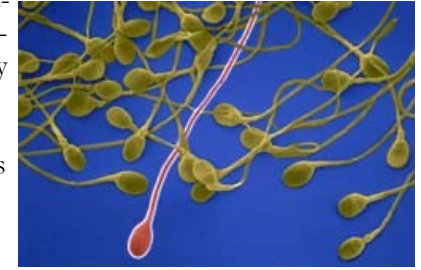


### INTRAUTERINE INSEMINATION (IUI)

IUI is performed when indicated by the gynecologist. A range of flexible & rigid catheters are available for difficult insemination. Both single & double density gradient semen wash are used to improve borderline semen parameters. Motility augmentation can be done for deserving cases.

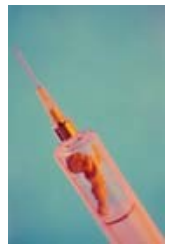
## NEEDLE ASPIRATION—AZOOSPERMIA

Fatherhood for azoospermic men is now a possibility thanks to advances in Assisted Reproductive Techniques. Percutaneous aspiration of sperm from epididymis, under ultrasound guidance when necessary, can predict the fertility potential of azoospermic men. If sperm are retrieved on biopsy, the couple is then counseled for Intra Cytoplasmic Sperm Injection (ICSI)



## RECURRENT PREGNANCY LOSS

Recurrent pregnancy loss needs an elaborate evaluation as the cause cannot be easily elucidated. At Queens, such couples are treated in the preconceptional period by evidenced based protocols to reduce fetal loss.



## LAPAROSCOPIC SURGERY

Women are offered diagnostic laparoscopy if indicated. Diagnostic hysterolaparoscopy with tubal chromotubation is done as a single diagnostic procedure. Extra uterine causes of sub-fertility such as endometriosis, adhesions, PID sequelae and anomalies are evaluated. Therapeutic procedures such as ovarian drilling, fulguration of endometriosis and ovarian cyst excision can be done during the same sitting.

